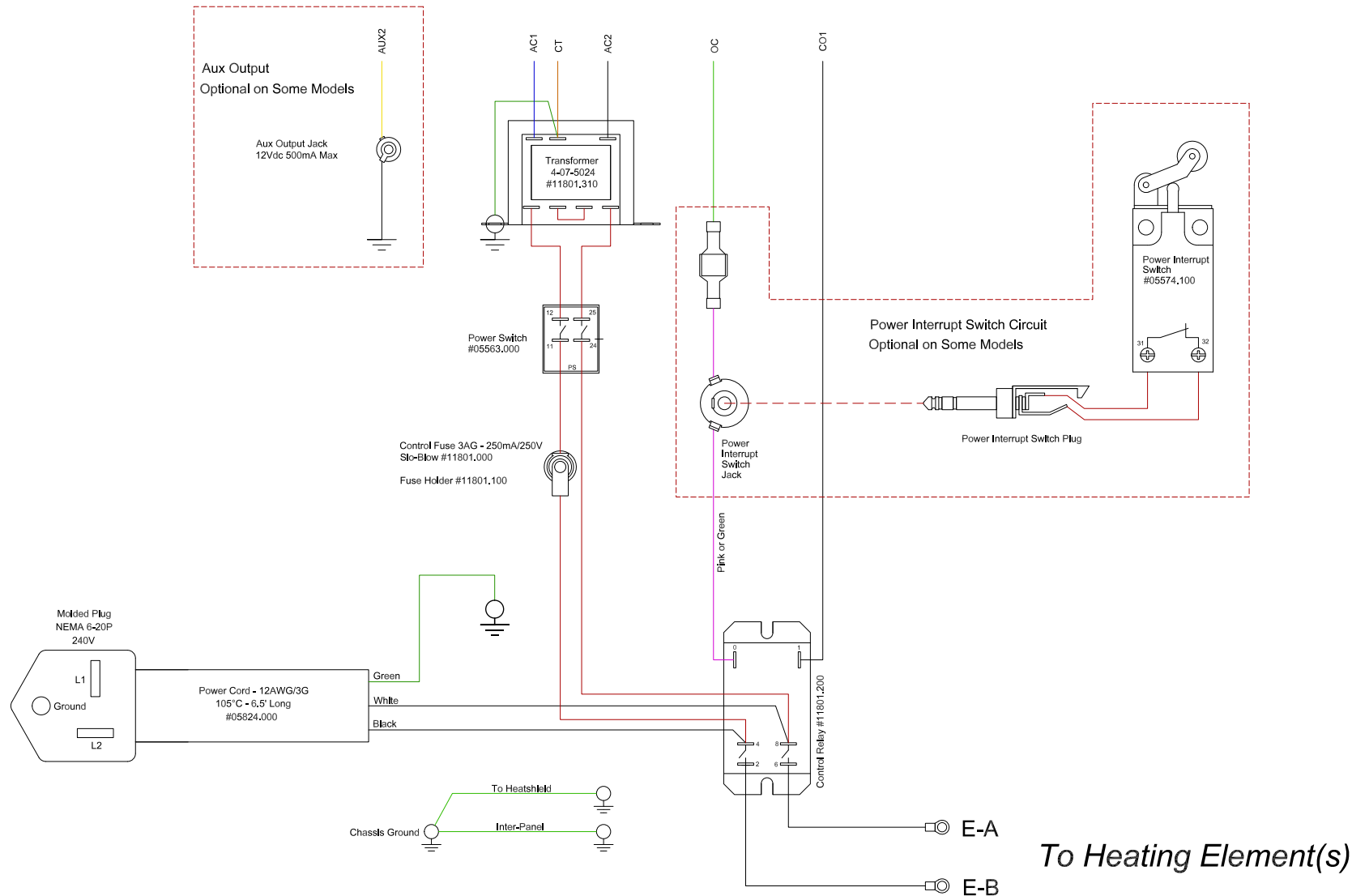


ECP-MR1/A1-100210-10

Driver: Mechanical Relay

Models: LB 18 - LB 22.5 - LB 27 - KO 18 - KO 22.5 - KO 27 - Cube 7 (240V) - GTS 17

To Electronic Controls



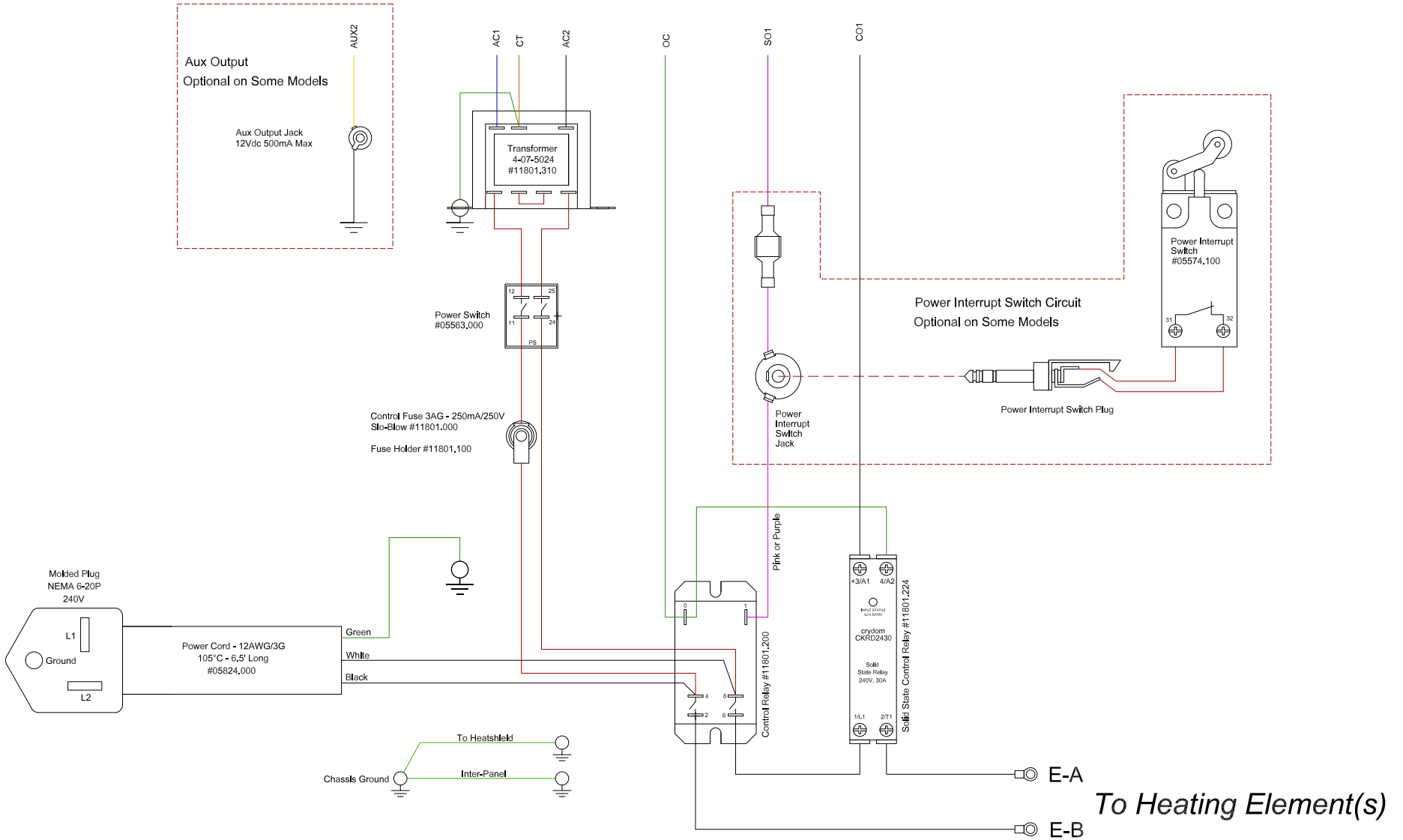
To Heating Element(s)

ECP-SS1/A1-100210-10

Driver: Solid State

Models: LB 18 - LB 22.5 - LB 27 - KO 18 - KO 22.5 - KO 27 - Cube 7 (240V) - GTS 17

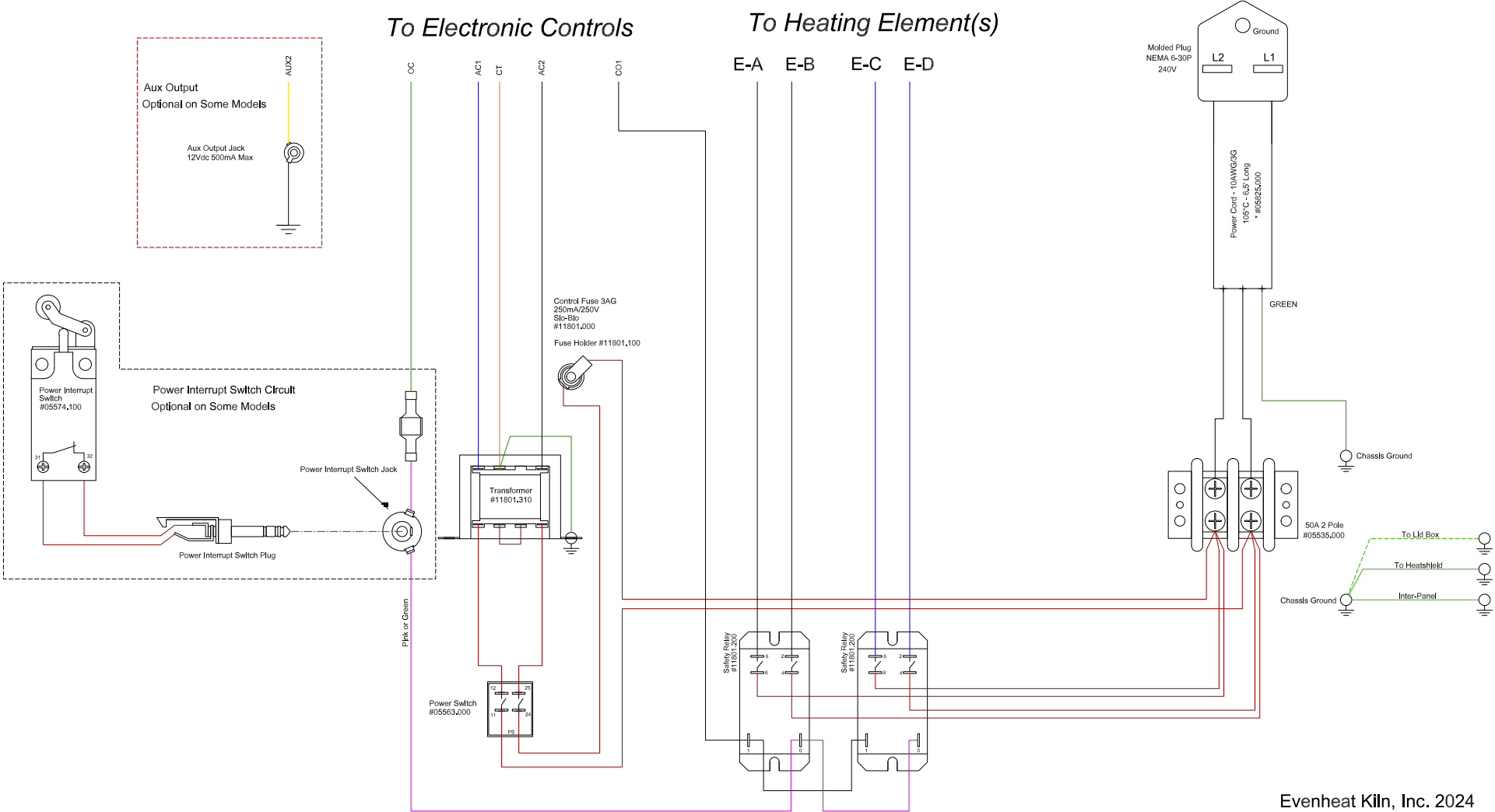
To Electronic Controls



ECP-MR2/A1-100310-10

Driver: Mechanical Relay

Models: GTS 18



ECP-SS2/A1-100310-10

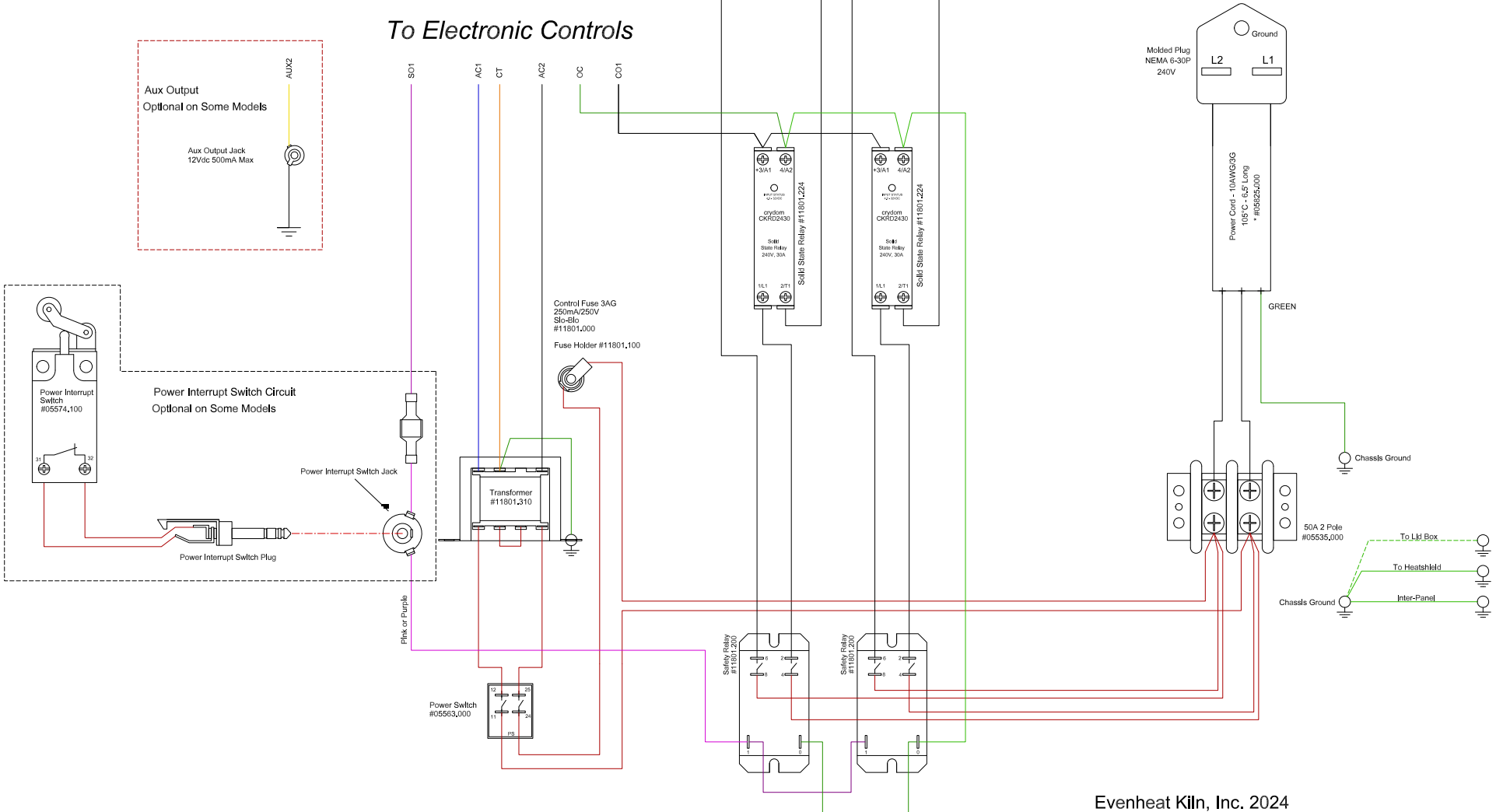
Driver: Solid State

Models: GTS 18

To Heating Element(s)

To Electronic Controls

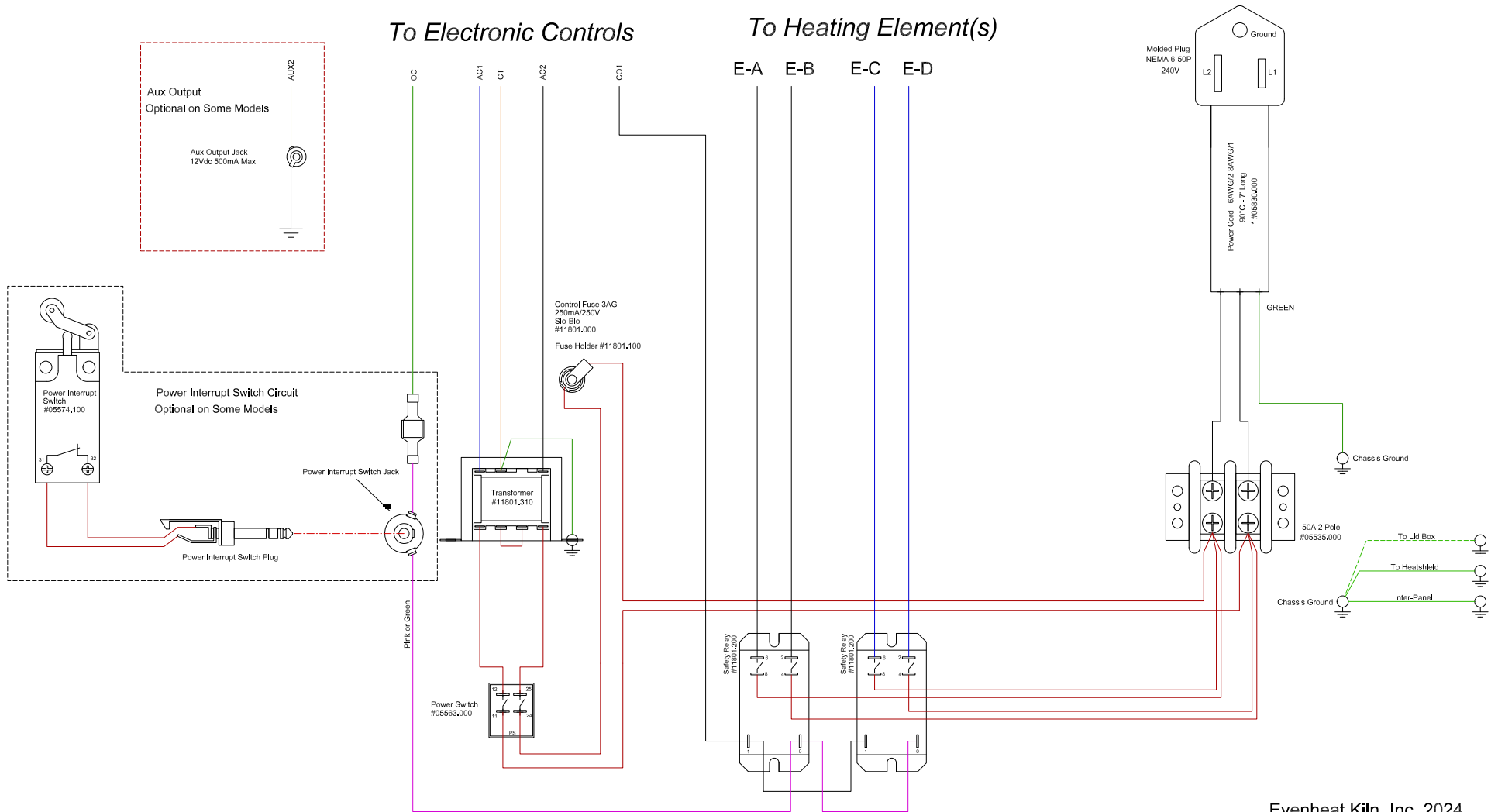
E-A E-B E-C E-D



ECP-MR2/A1-100410-10

Driver: Mechanical Relay

Models: GTS 23



ECP-SS2/A1-100410-10

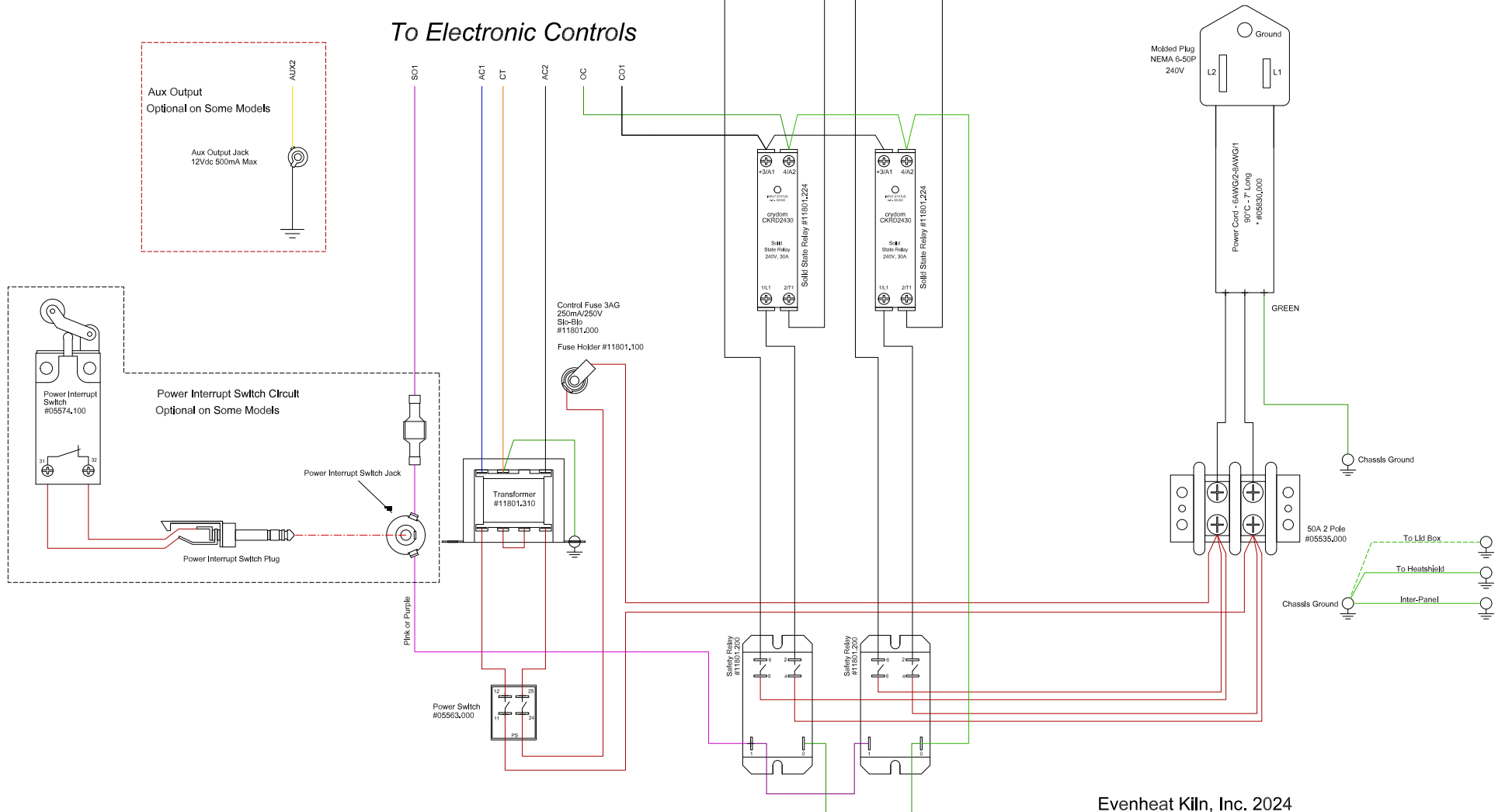
Driver: Solid State

Models: GTS 23

To Heating Element(s)

To Electronic Controls

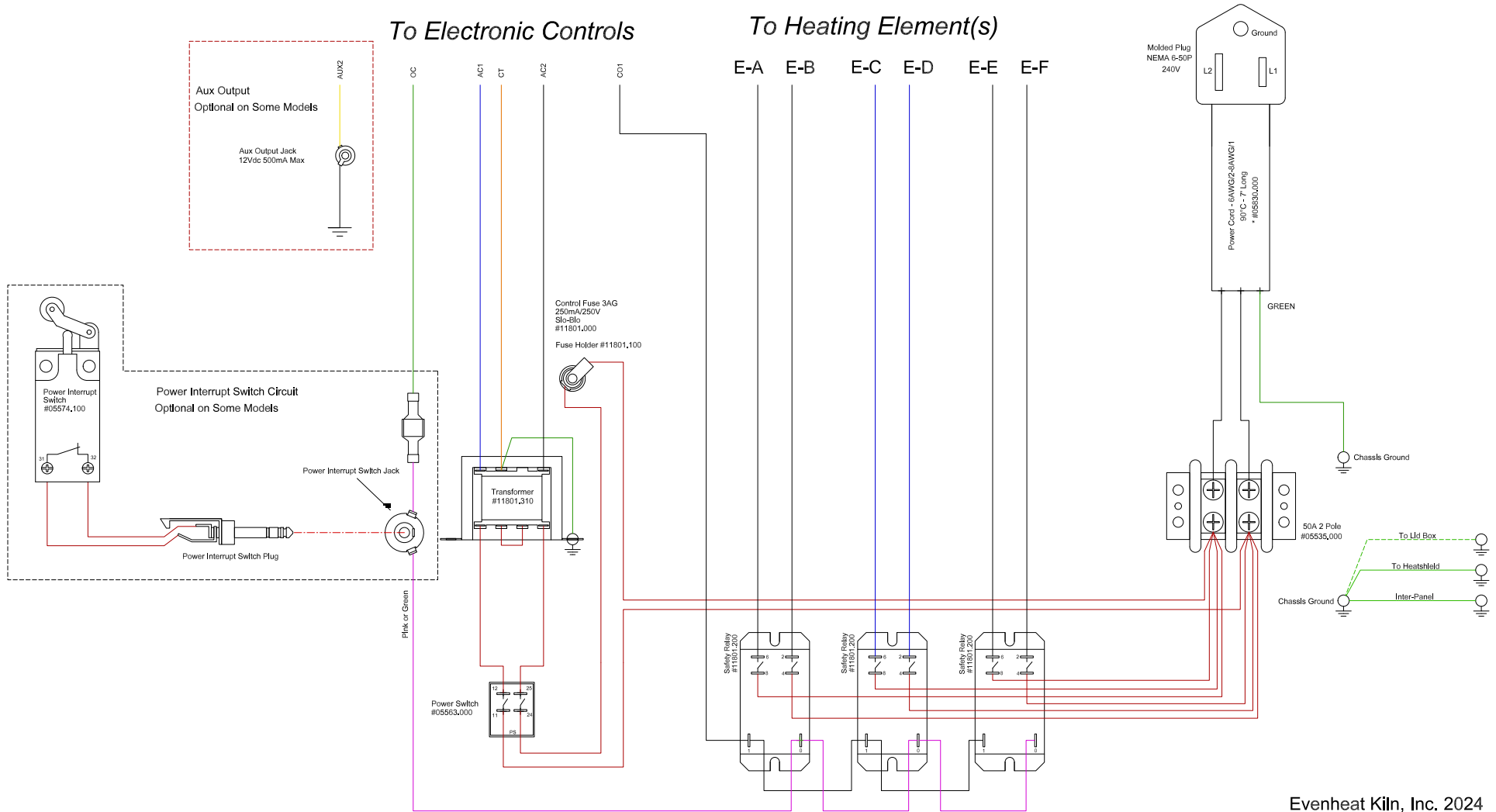
E-A E-B E-C E-D



ECP-MR3/A1-100410-10

Driver: Mechanical Relay

Models: GTS 24 - GTS 28 - GTS 41 - GTS 2541 - HT-2

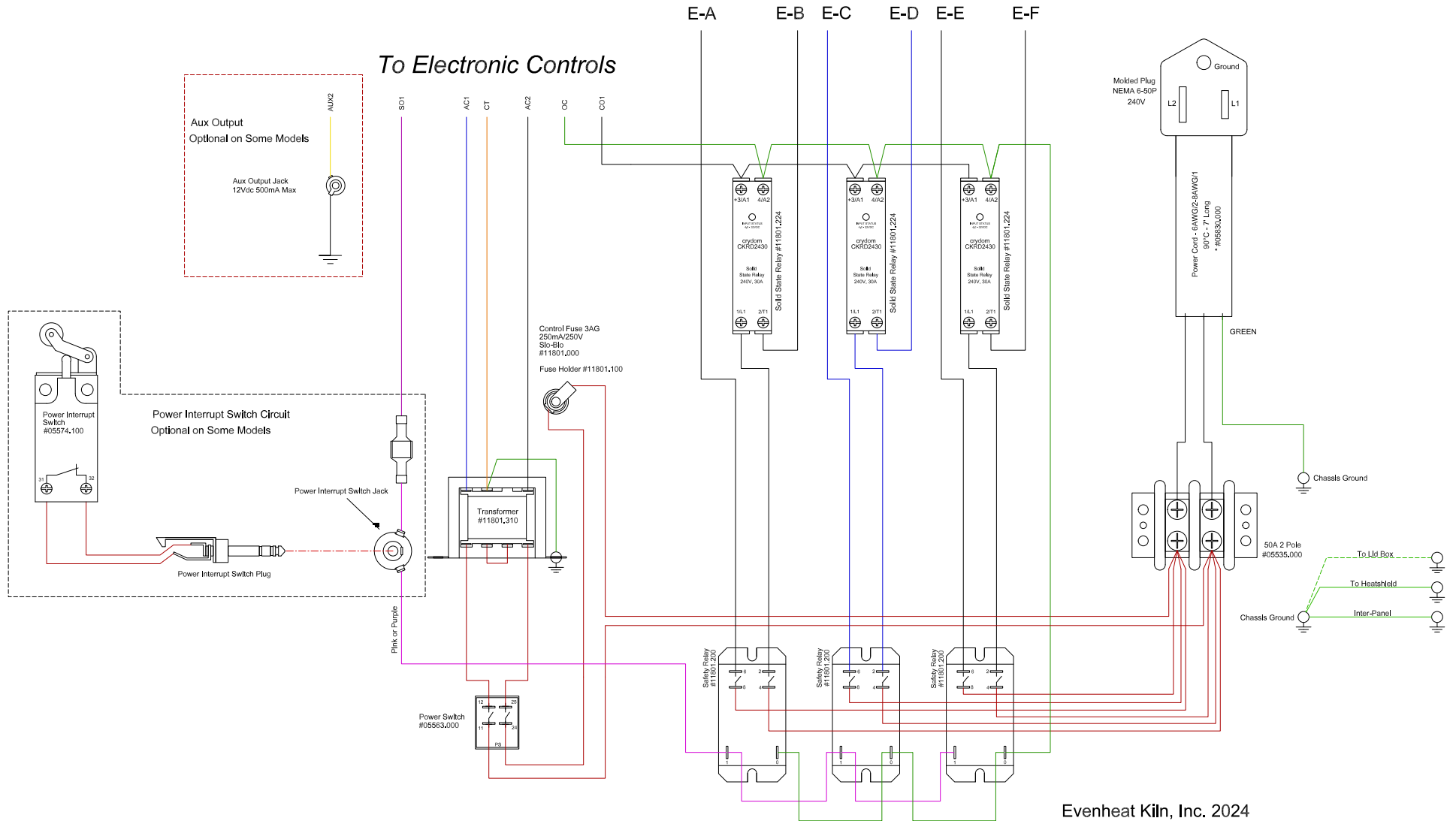


ECP-SS3/A1-100410-10

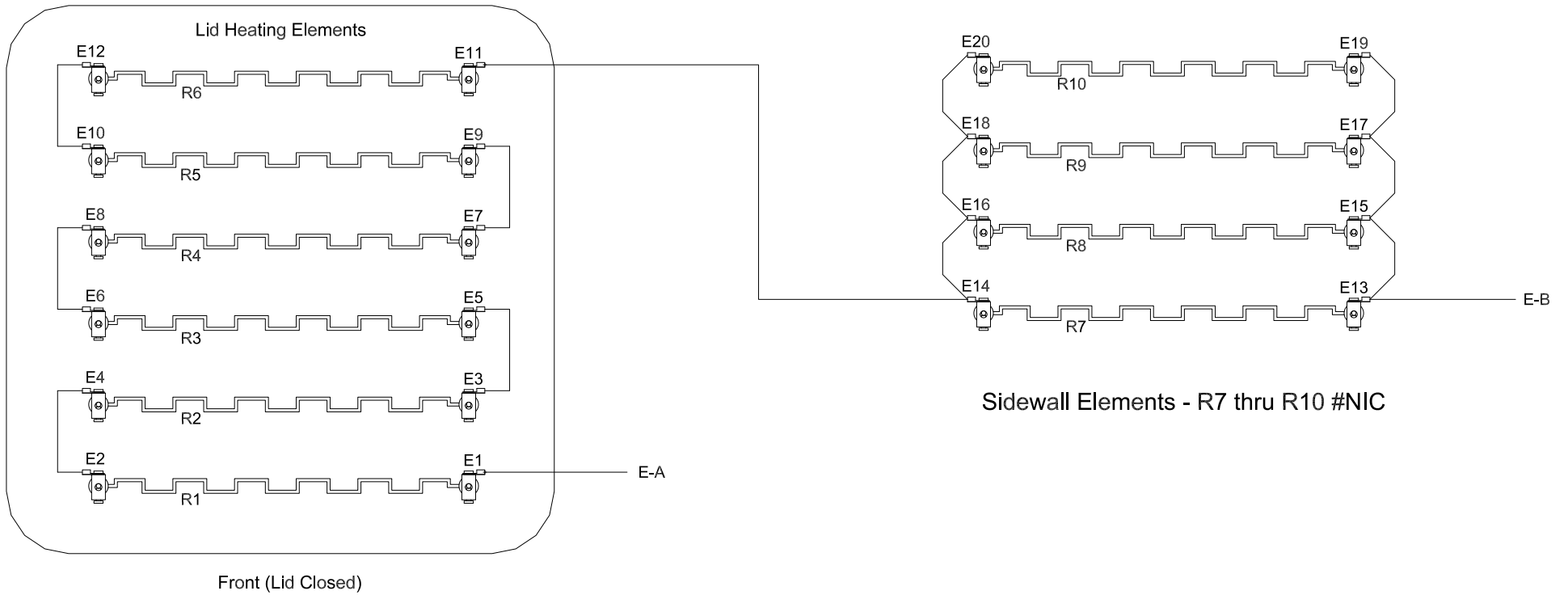
Driver: Solid State

Models: GTS 24 - GTS 28 - GTS 41 - GTS 2541 - HT-2

To Heating Element(s)

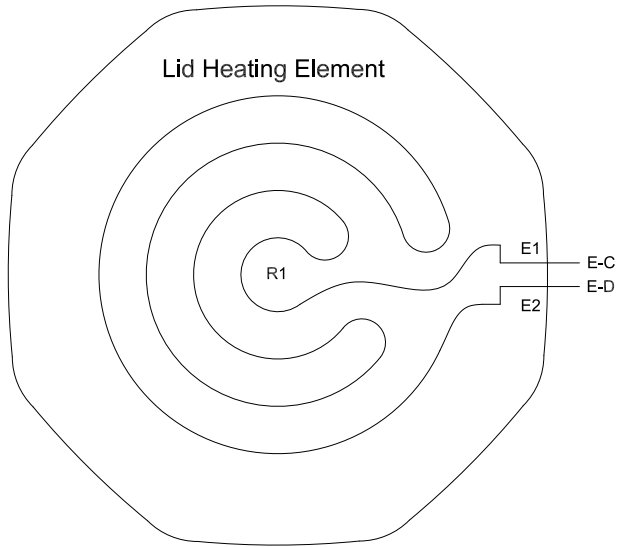


GTS 17 HEATING ELEMENT DIAGRAM



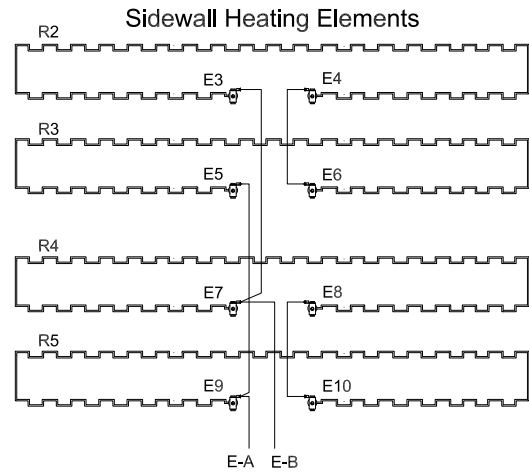
Lid Elements - R1 thru R6 #00106.700

GTS 18 HEATING ELEMENT DIAGRAM



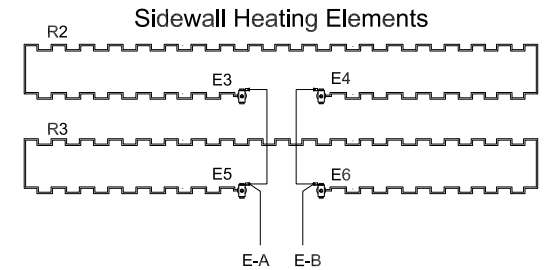
Serial #125356 and Above

240V SINGLE PHASE
 Lid Element - R1 #00081.000
 Sidewall Elements - R2 thru R5 #00083.010

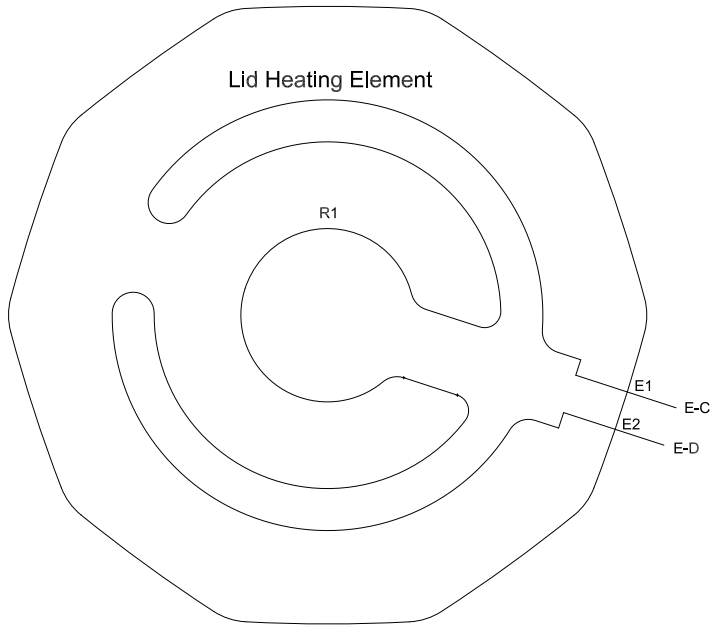


Serial #125355 and Below

240V SINGLE PHASE
 Lid Element - R1 #00081.000
 Sidewall Elements - R2 and R3 #00083.000

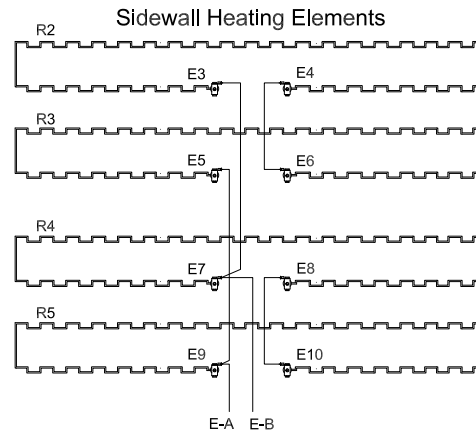


GTS 23 HEATING ELEMENT DIAGRAM



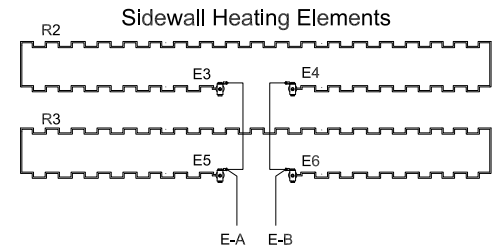
Serial #125356 and Above

240V SINGLE PHASE
 Lid Element - R1 #00086.000
 Sidewall Elements - R2 thru R5 #00088.010

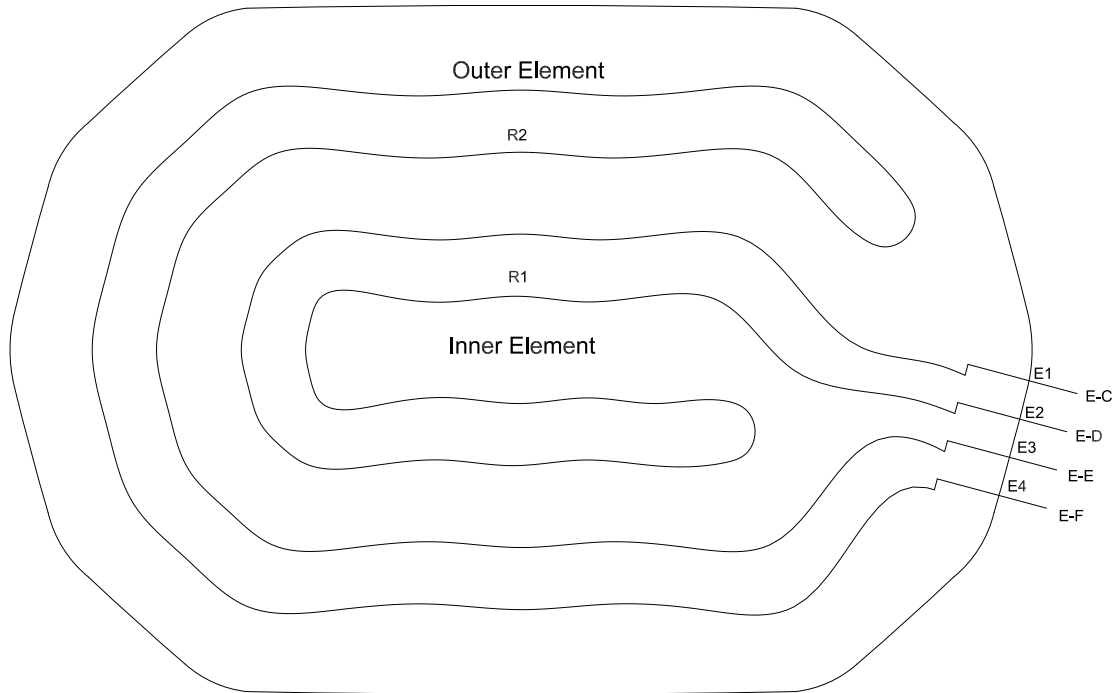


Serial #125355 and Below

240V SINGLE PHASE
 Lid Element - R1 #00086.000
 Sidewall Elements - R2 and R3 #00088.000

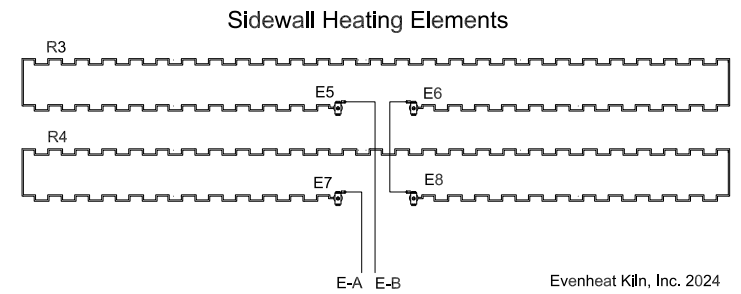


GTS 2541 HEATING ELEMENT DIAGRAM



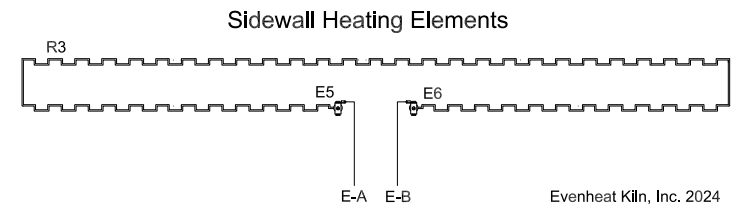
Serial #125356 and Above

240V SINGLE PHASE
 Lid Element Inner - R1 #00091.000
 Lid Element Outer - R2 #00091.100
 Sidewall Elements - R3 and R4 #00093.010



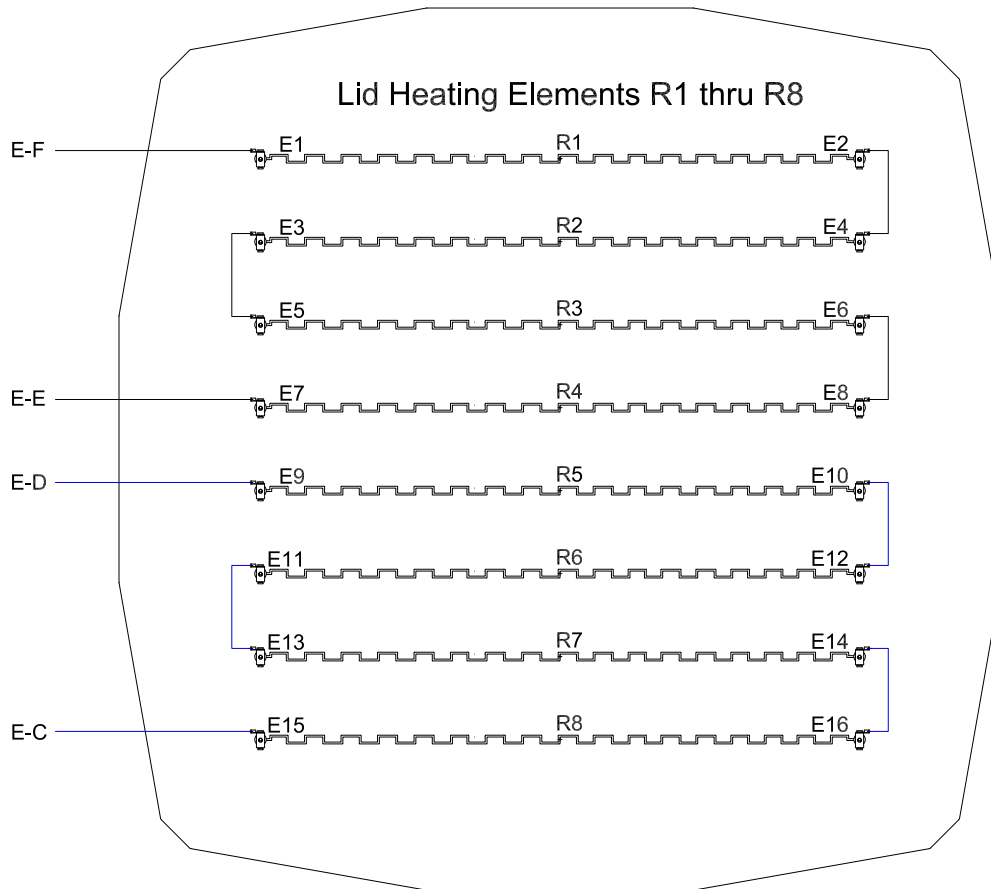
Serial #125355 and Below

240V SINGLE PHASE
 Lid Element Inner - R1 #00091.000
 Lid Element Outer - R2 #00091.100
 Sidewall Elements - R3 #00093.000



GTS 24 HEATING ELEMENT DIAGRAM

LID FRONT - TOP VIEW



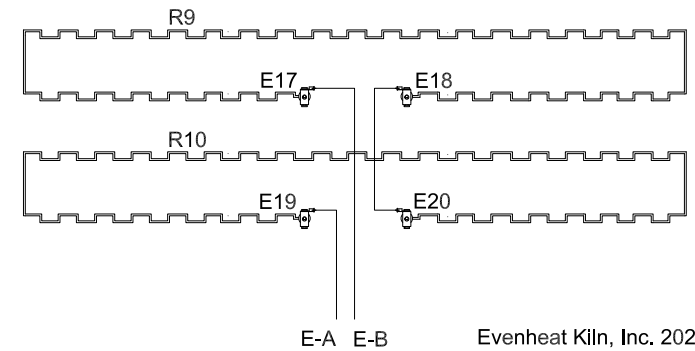
220V/230V/240V SINGLE PHASE
 220V/230V/240V 3 PHASE (DELTA)
 380V/400V/415V (3 PHASE WYE)

Lid Elements - R1 thru R8 #00107.000
 Sidewall Elements - R9 and R10 #00107.101

200V/208V SINGLE PHASE
 200V/208V 3 PHASE (DELTA)

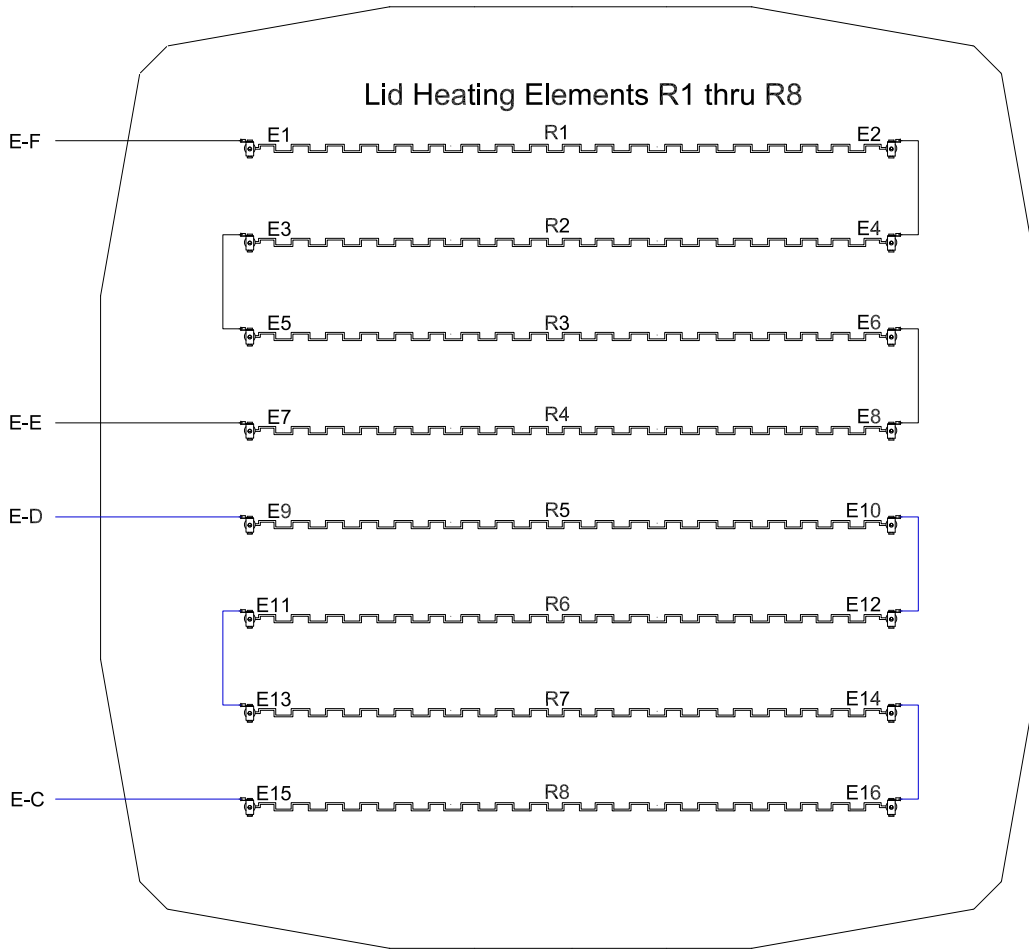
Lid Elements - R1 thru R8 #00107.010
 Sidewall Elements - R9 and R10 #00107.111

Sidewall Heating Elements R9 and R10



GTS 28 HEATING ELEMENT DIAGRAM

LID FRONT - TOP VIEW



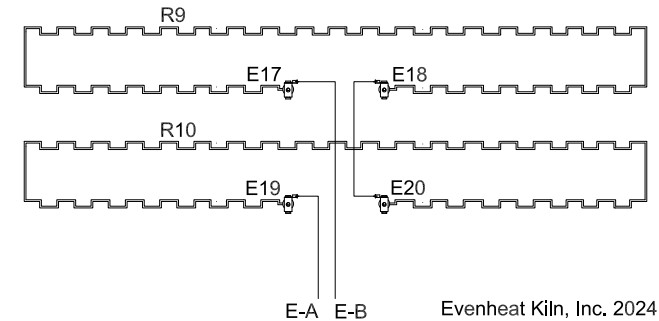
220V/230V/240V SINGLE PHASE
 220V/230V/240V 3 PHASE (DELTA)
 380V/400V/415V (3 PHASE WYE)

Lid Elements - R1 thru R8 #00107.500
 Sidewall Elements - R9 and R10 #00107.513

208V SINGLE PHASE
 208V 3 PHASE (DELTA)

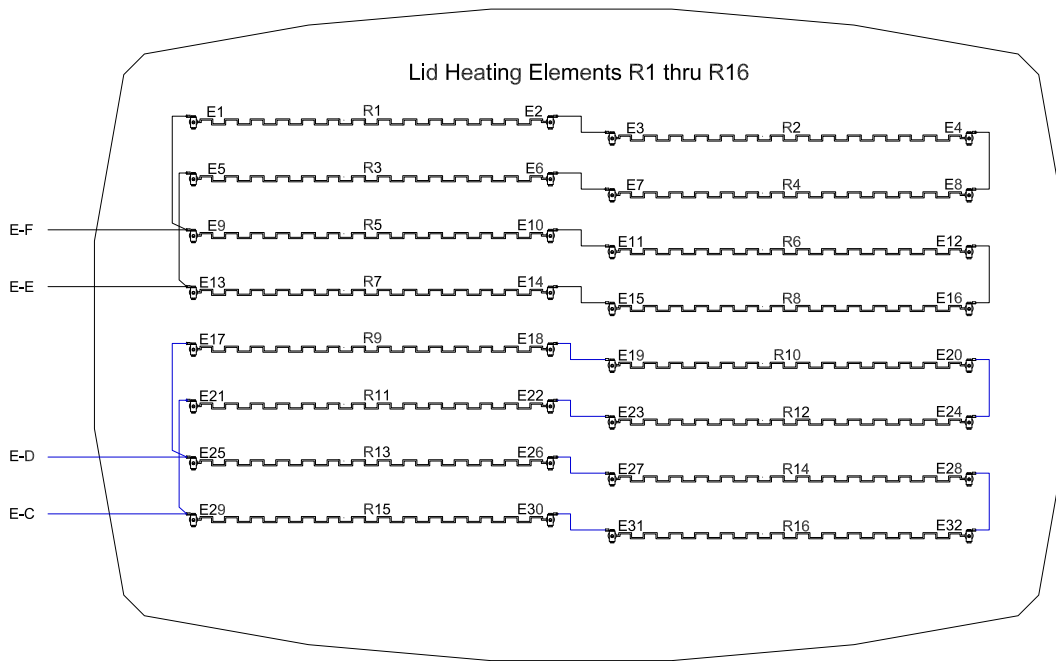
Lid Elements - R1 thru R8 #00107.515
 Sidewall Elements - R9 and R10 #00107.525

Sidewall Heating Elements R9 and R10



GTS 41 HEATING ELEMENT DIAGRAM

LID FRONT - TOP VIEW

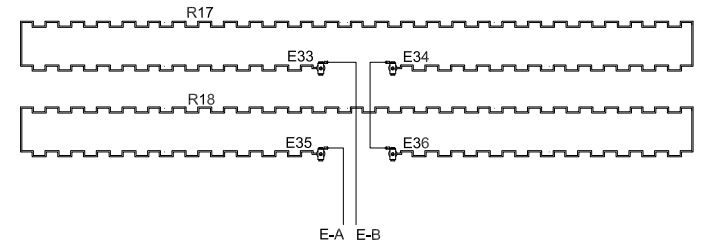


Serial #125627 and Above

230V/240V SINGLE PHASE
 230V/240V 3 PHASE (DELTA)
 400V/415V (3 PHASE WYE)

Lid Elements - R1 thru R16 #00108.000
 Sidewall Elements - R17 and R18 #00108.101

Sidewall Heating Elements R17 and R18

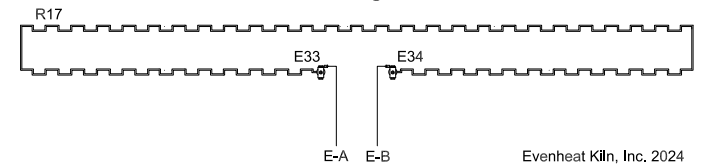


Serial #125626 and Below

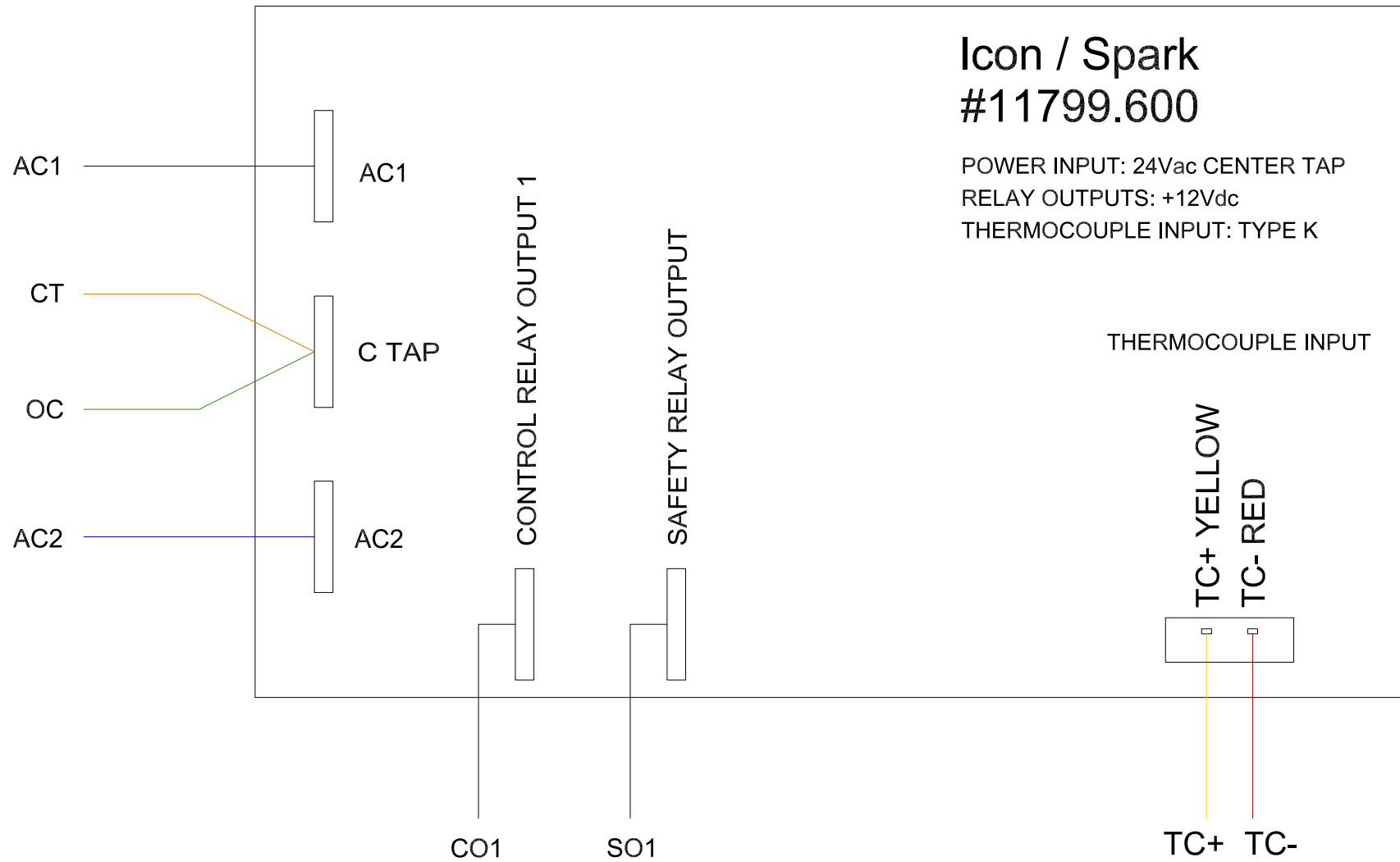
230V/240V SINGLE PHASE
 230V/240V 3 PHASE (DELTA)
 400V/415V (3 PHASE WYE)

Lid Elements - R1 thru R16 #00108.000
 Sidewall Elements - R17 #00108.100

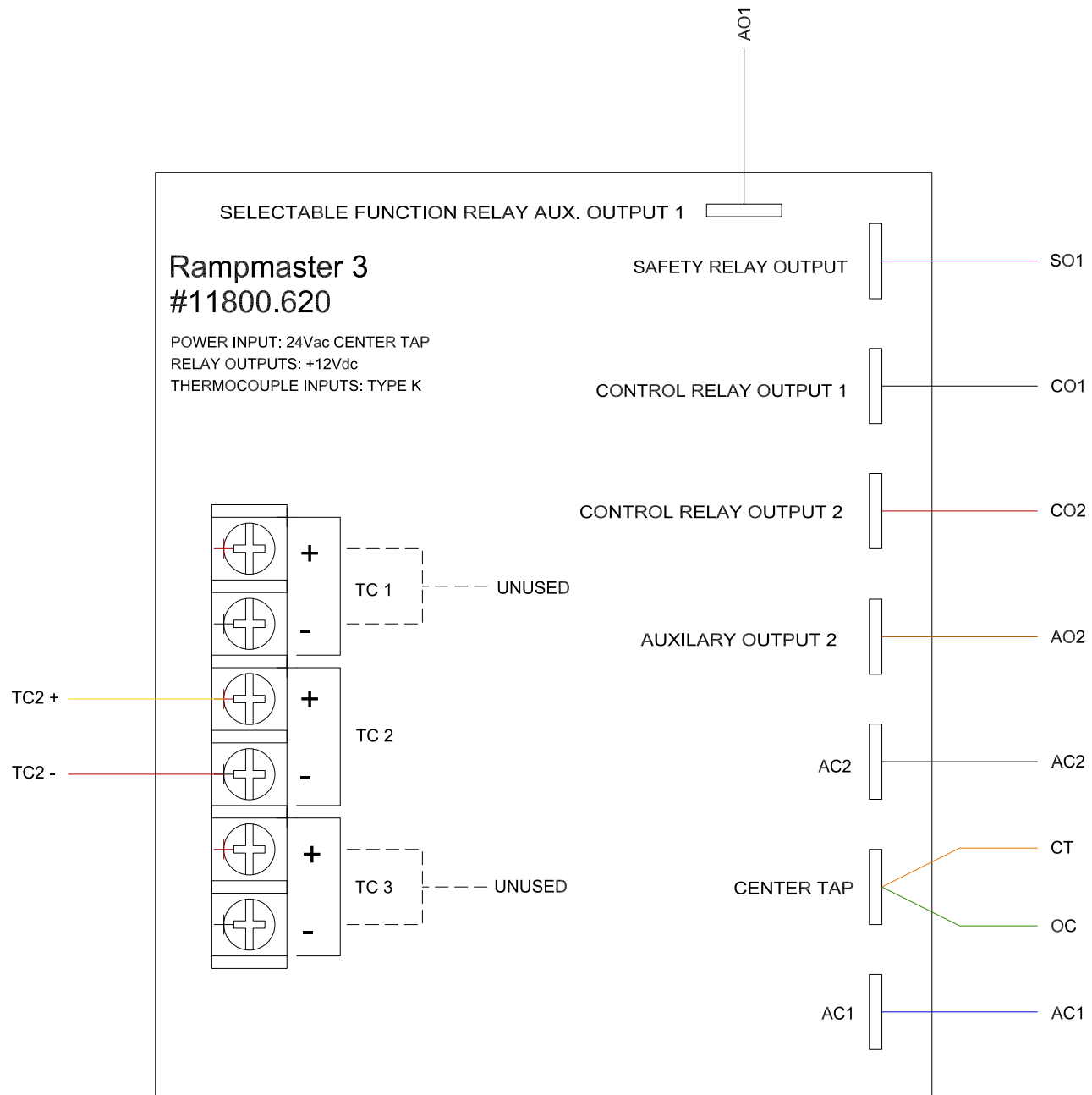
Sidewall Heating Elements



Icon Electronic Controls

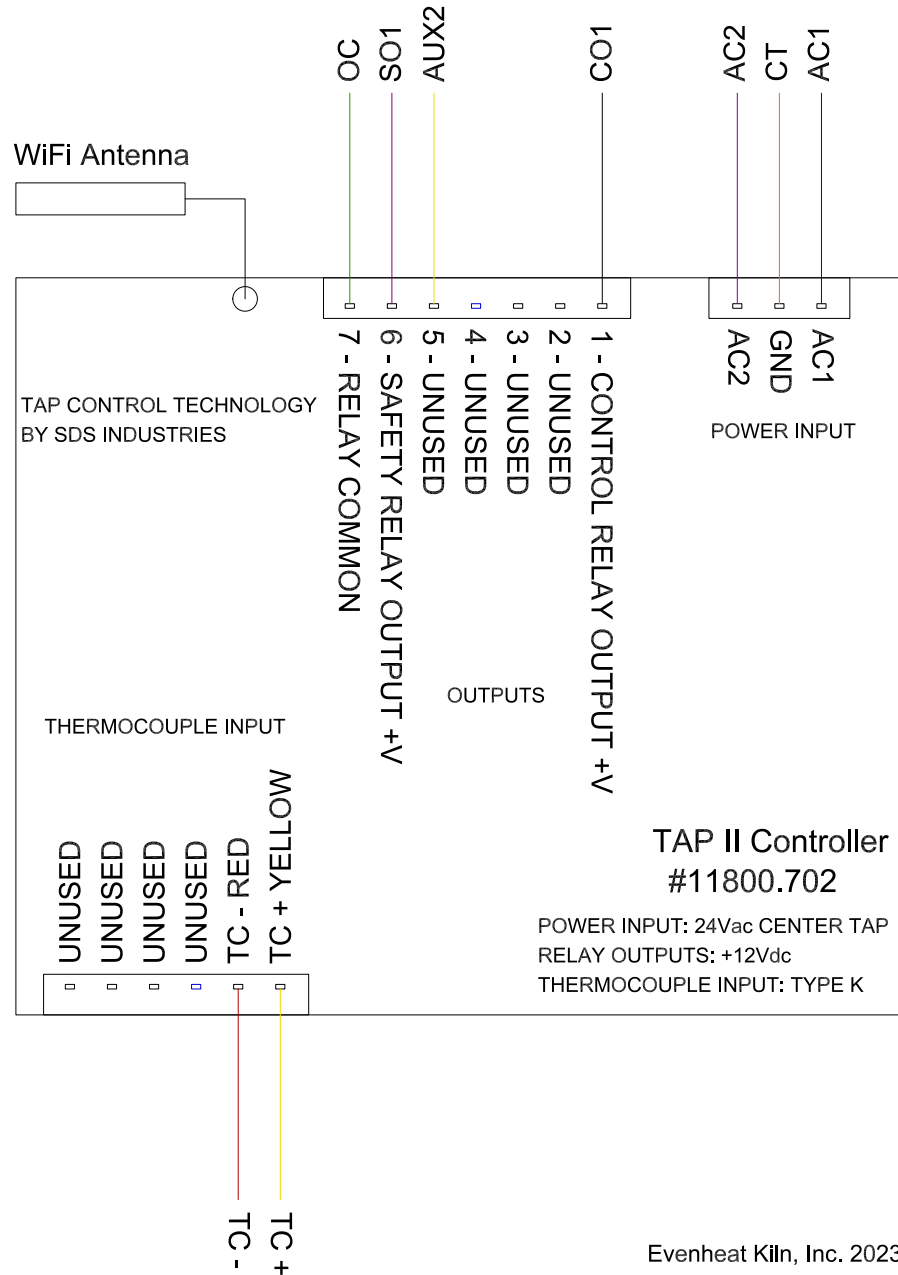


RM3 Electronic Controls



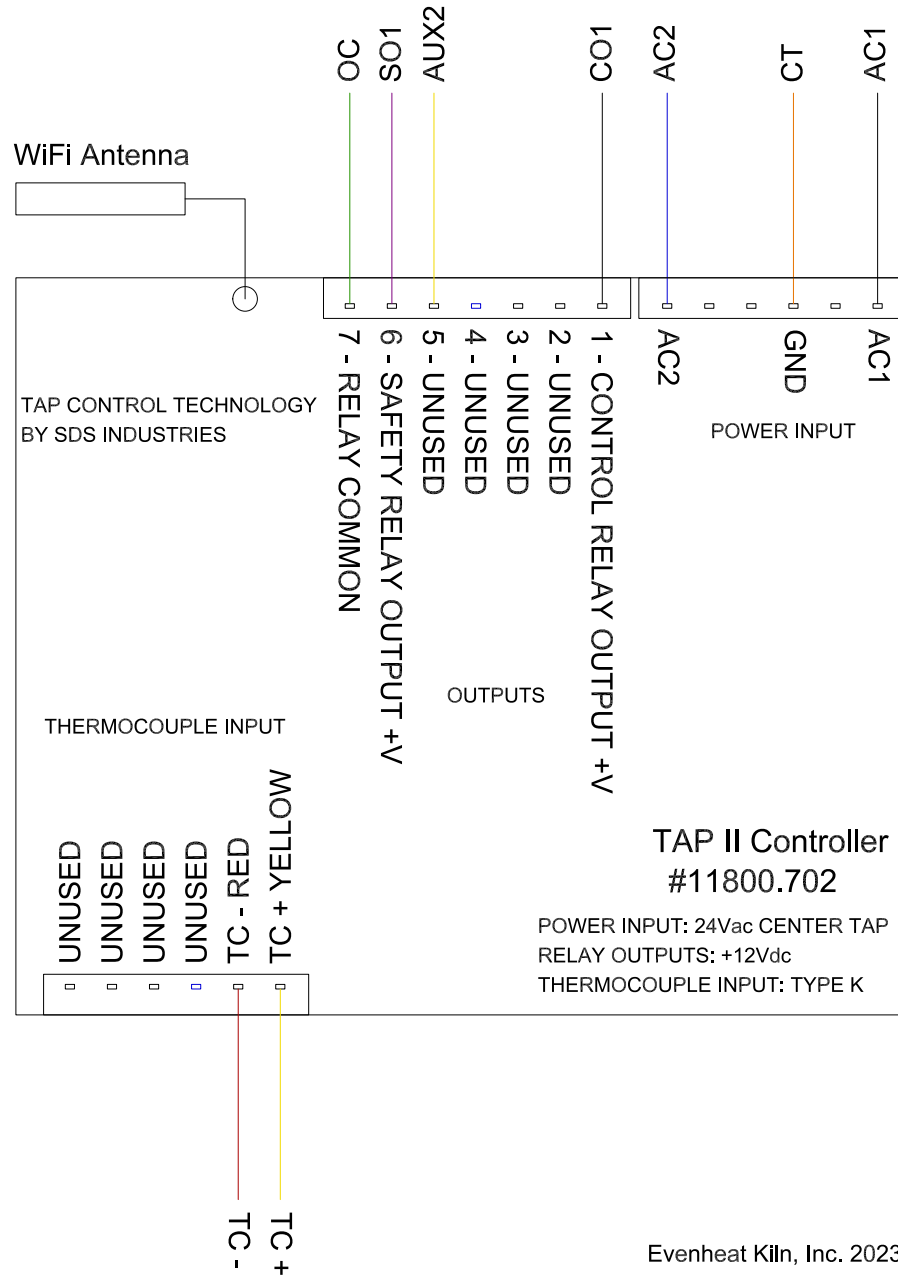
TAP II Electronic Controls

w/ 3 Pin Power Input

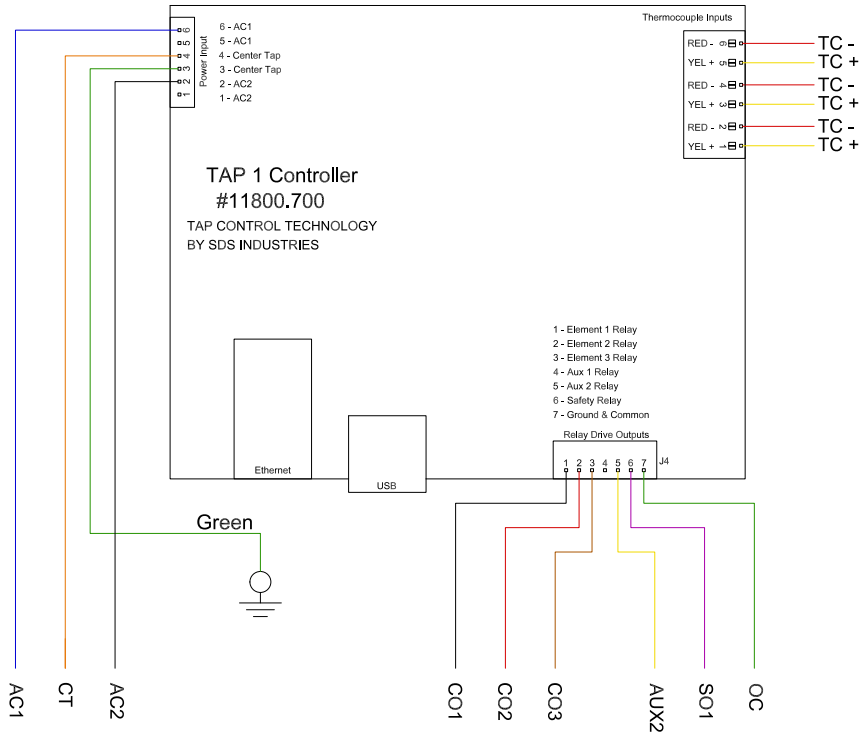


TAP II Electronic Controls

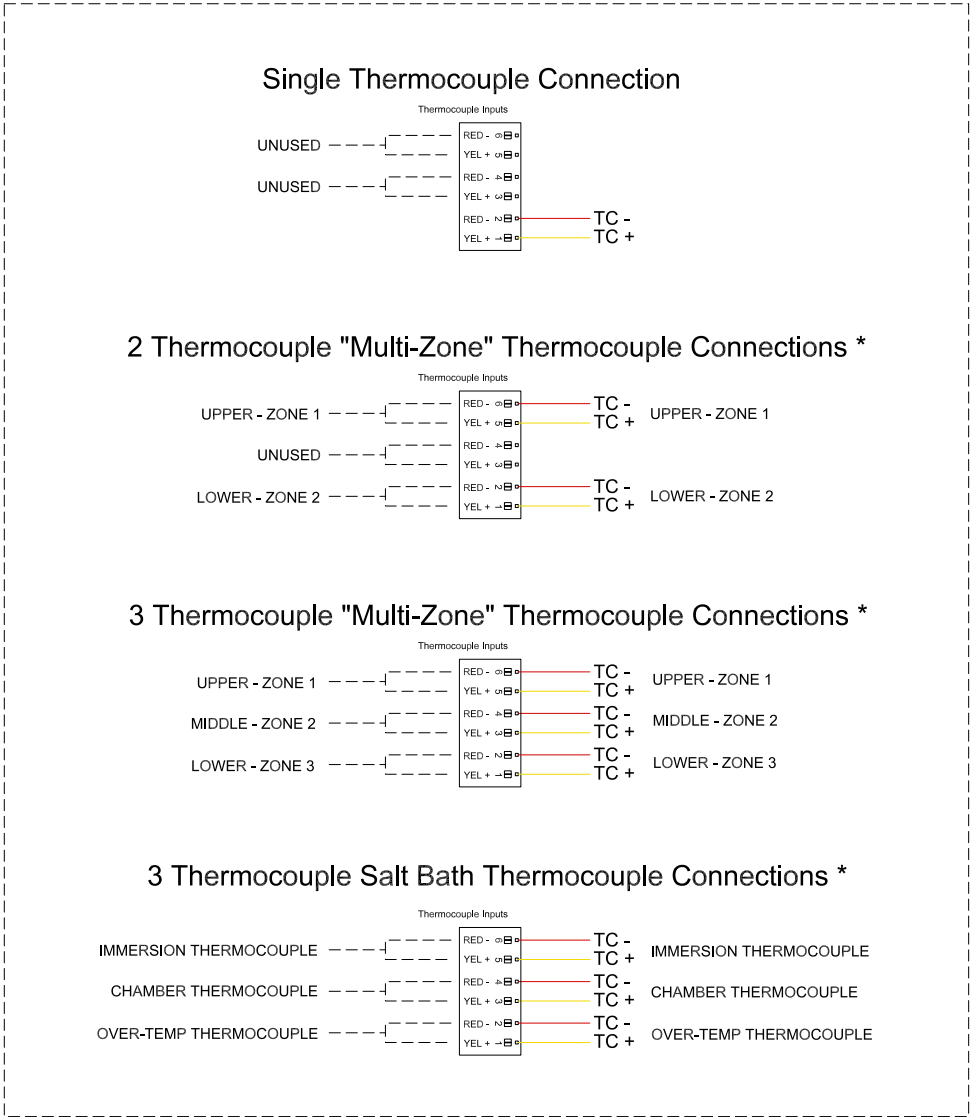
w/ 6 Pin Power Input



TAP I Electronic Controls

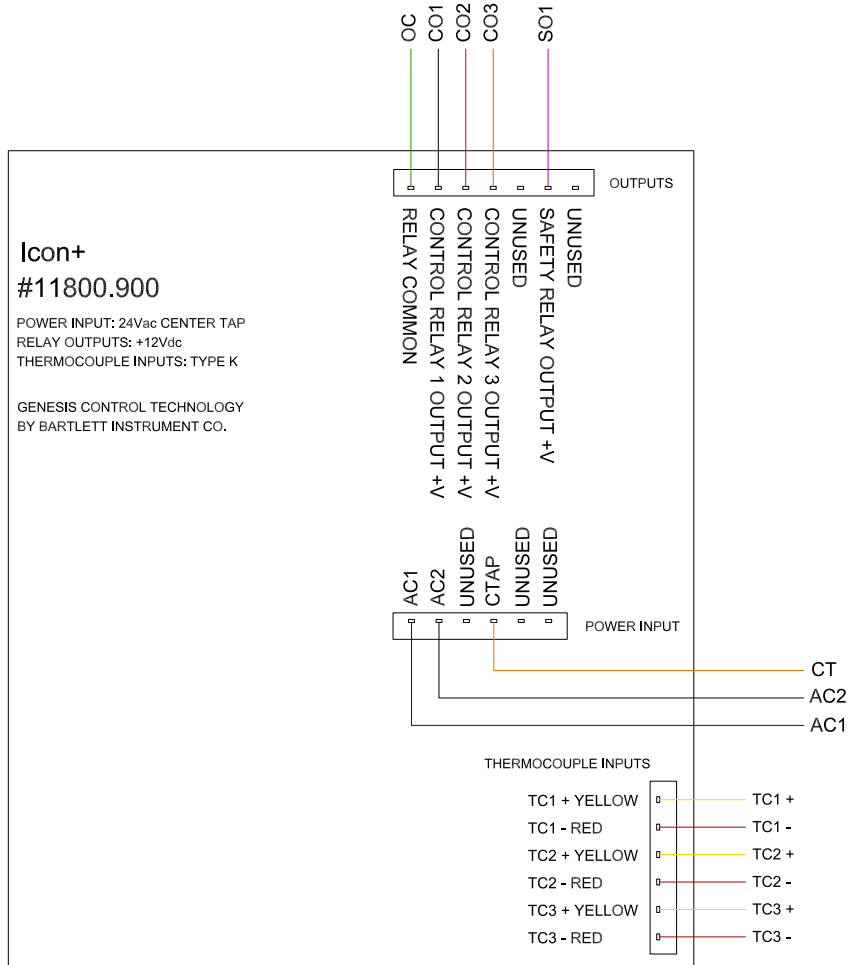


Evenheat Kiln, Inc. 2024



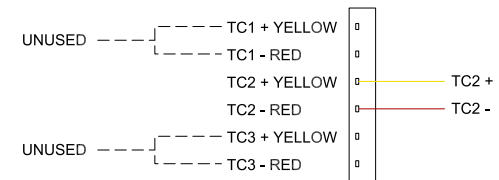
* Must Be Factory Configured For Multi-Zone Control

Icon+ Electronic Controls

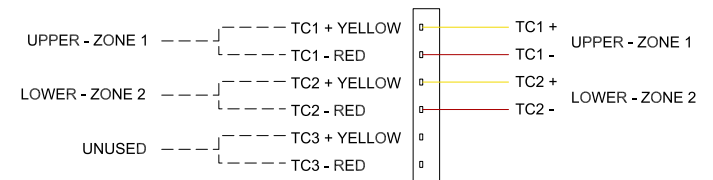


Evenheat Kiln, Inc. 2024

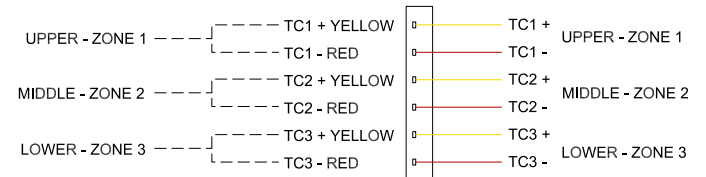
Single Thermocouple Connection



2 Thermocouple "Multi-Zone" Thermocouple Connections *



3 Thermocouple "Multi-Zone" Thermocouple Connections *



* Must Be Factory Configured For Multi-Zone Control

Sample Thermocouple Assembly

